

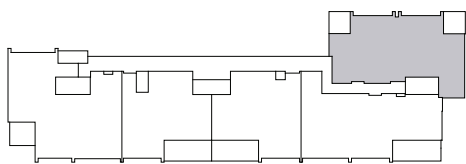
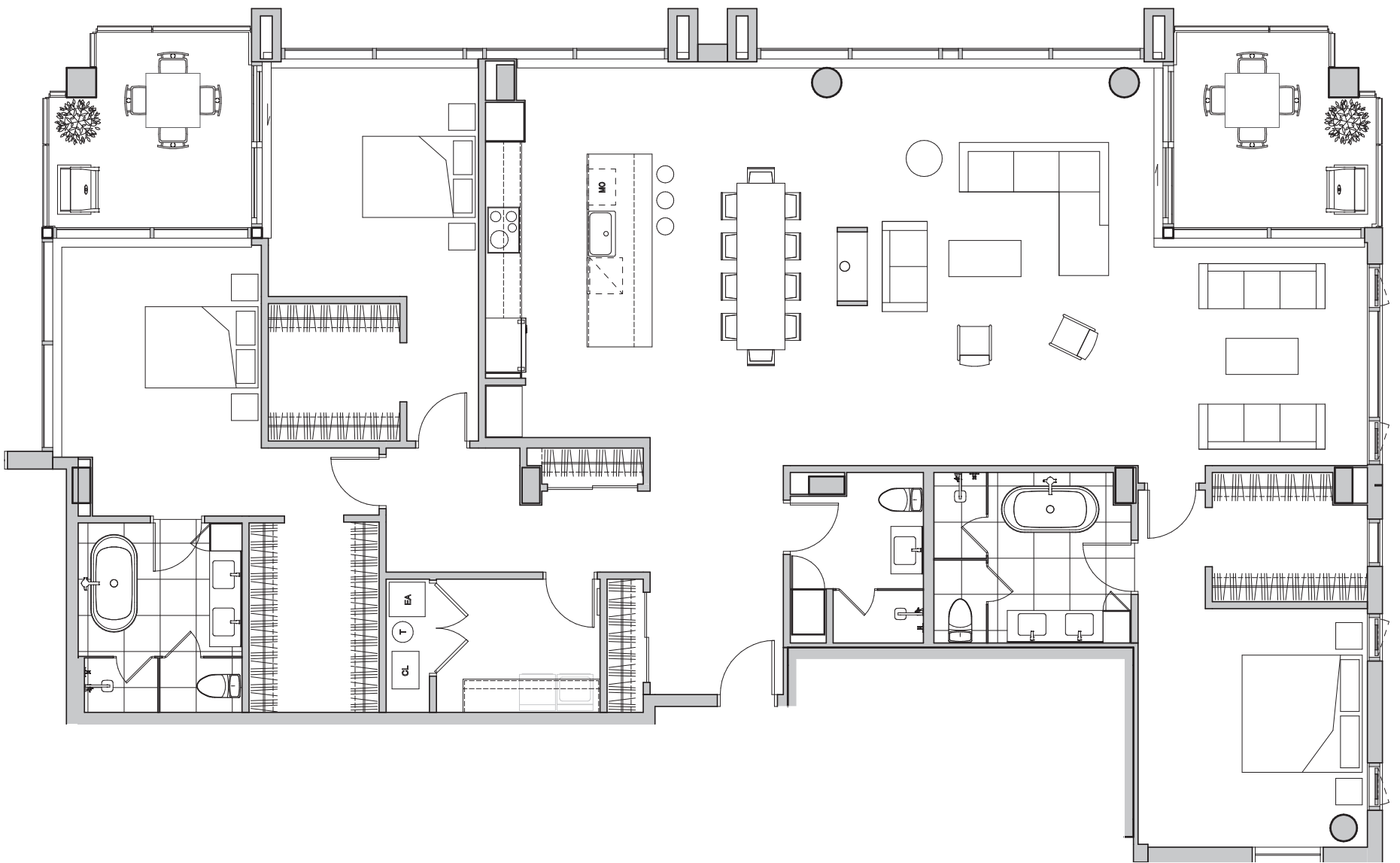
705

2583 pi<sup>2</sup>/sq.ft.

Balcon 1 / Balcony 1: 112 pi<sup>2</sup>

Balcon 2 / Balcony 2: 112 pi<sup>2</sup>

TOTAL: 2807 pi<sup>2</sup>



**DIMENSIONS DES PIÈCES / ROOM SIZES**

<b>01</b>	Séjour / Living	32'-4" X 22'-6"
<b>02</b>	Cuisine / Kitchen	18'-6" X 9'-2"
<b>03</b>	Chambre no.1 / Bedroom no.1	12'-8" X 13'-2"
<b>04</b>	Salle de bain no.1 / Bathroom no.1	10'-11" X 9'-5"
<b>05</b>	Chambre no.2 / Bedroom no.2	11'-6" X 15'-4"
<b>06</b>	Salle de bain no.2 / Bathroom no.2	9'-0" X 10'-6"
<b>07</b>	Chambre no.3 / Bedroom no.3	11'-7" X 13'-0"
<b>08</b>	Salle de bain no.3 / Bathroom no.3	7'-4" X 9'-5"
<b>09</b>	Salle de lavage / Laundry room	9'-0" X 7'-4"